

## Hidden Spring Farm

Name: \_\_\_\_\_

Address: \_\_\_\_\_

Phone/Email: \_\_\_\_\_

Deposit: \_\_\_\_\_ \*Balance due at pickup

**Make check payable to: Eric Fetter**

\_\_\_ 1/2 share Or \_\_\_ Whole Animal

**(\$500 Deposit req)**

By choosing this option, you have the ability to customize your order. The Butcher will make the cuts that you prefer. We charge \$3.30 per pound for the whole animal or \$3.50 per pound for the half share on the hanging weight. Butchering costs are additional and will be determined based on the selected products and weight of the animal.

\_\_\_ 1/4 share **\$770.00**

**(\$200 Deposit req)**

An ideal package that will last a medium size family most of the year. This package includes a wide variety of steaks and roasts from both hind and front quarters, as well as hamburger in 1 lb. packages. All the meat will be vacuum sealed and frozen.

\_\_\_ 1/8 Share

**(\$100 Deposit req)**

An economy size package suitable for a smaller family. It includes a nice variety of steaks, roasts, beef cubes, chipped steak and hamburger in 1 lb. packages. All meat will be vacuum sealed and frozen.

### Individual orders:

#### Hamburger by the pound

\_\_\_ lbs X **\$5.50**

\$5.50 per pound, all meat will be vacuum sealed in 1lb packages and frozen.

PLACE  
STAMP  
HERE

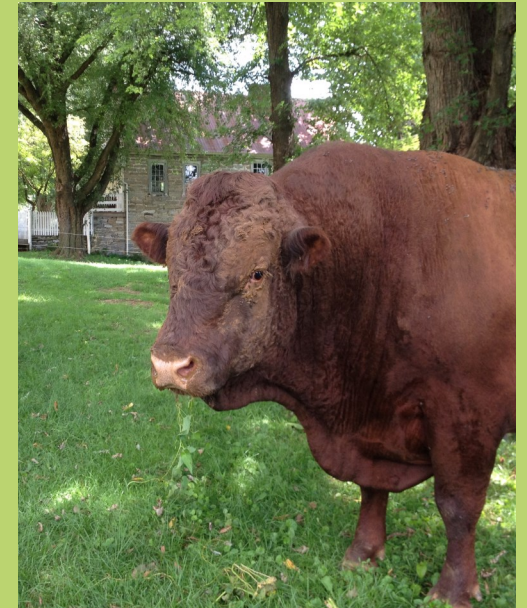
Hidden Spring Farm  
120 Mountain Rd  
Newmanstown PA 17073

## HIDDEN SPRING FARM

IN PARTNERSHIP WITH

**Historic Schaefferstown  
Inc.**

**100% Pasture Raised  
Grass Fed Beef**



### Order Information

Contact: Herd Manager

Eric Fetter

**(717)949-3969**



## Benefits of a Heritage Breed at the Historic Alexander Schaeffer Farm

- ◆ Obtain local quality naturally raised beef
- ◆ View this living piece of history in a natural farm setting
- ◆ Obtain an understanding and interest in the heritage breed of livestock
- ◆ Encourage breed growth through a heritage breeding program
- ◆ Initiate new programs and enhancements at the historic farm



## Hidden Spring Farm

is a family owned and operated business in Lebanon County, PA. We focus on raising healthy animals in a natural, stress-free environment the way God designed them to be. We encourage eating fresh, local foods to help sustain local farms. By doing so it gives the consumer the opportunity to know where their food comes from and how it is grown. We also raise pastured poultry and pork.

We welcome and encourage visits to the farm (by appointment) if you desire to meet us and see our operation.



## Hidden Spring Farm

Contact: Eric or Kristen Fetter

(717) 949-3969

Email:ekfetter10@hotmail.com

## Who We Are

Historic Schaefferstown Inc. is a non profit, educational organization dedicated to the culture and unique history of Schaefferstown. The Pennsylvania German and Swiss cultures which flourished here during the last few centuries are authentically presented among several historic sites.

## The Devon Cattle on the Farm

As we preserve history with our museum we have enhanced the farm with a small herd of heritage Devon cattle. This historic breed is one of the oldest beef breeds in existence today. The Pilgrims brought Devon cattle with them to New England beginning in 1623. The Devon is known for high quality beef and the breed's hardiness and grazing ability makes it an excellent choice for grass based production. The breed's history as a dual purpose animal gives it greater maternal ability than most other beef breeds.

Here at the Alexander Schaeffer Farm our herd is rotationally grazed on our certified organic farm, given a new paddock daily with fresh water and access to free choice kelp and salt for their nutritional needs. At no time do our cattle receive any grain or growth hormones of any kind. We run a cow/calf and finishing operation so that we can guarantee a quality end product.

